



Positive displacement low flow sensor for continuous measurement and batch control

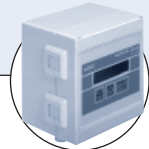
- For highly viscous fluids
- Electronics for indication, monitoring, transmitting, On/Off control and batch control

Type 8071 can be combined with...



Type 8025

Remote Universal flow transmitter



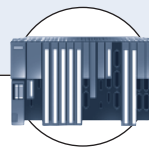
Type 8025

Dosing system
Konti-Dos



Type 2712 (8630)

Continuous
TopControl system



PLC

This positive displacement sensor is specially designed for measurement or batch control of highly viscous fluids like glue, honey or oil. This sensor can be easily connected to the universal transmitter Type 8025 or the batch controller Type 8025.

The design of this low flow sensor is based on the oval rotor principle. This has proven to be a reliable and highly accurate volumetric method of measuring flow. Exceptional repeatability and high accuracy over a wide range of viscosities and flowrates are features of that design. The low pressure drop and high pressure rating make it suitable for both gravity and pump (in-line) applications.

General data	
Compatibility	with Type 8025 Universal transmitter or batch controller (see corresp. data sheet)
Materials wetted parts	Body: Aluminium, PPS, stainless steel (316F) Rotor: PPS, stainless steel (316F) Shaft: Hastalloy C, stainless steel (316F) Seal: FKM - EPDM
Electrical connection	3-wire cable, 1 m length
Electrical data	
Sensor	Hall
Current consumption	≤ 9 mA
Output frequency	Open collector, NPN, max. 25 mA, 4.5 to 24 V DC
K-factor	
0.5-50 l/h	1552 pulses/l
2-100 l/h	1000 pulses/l
15-500 l/h	400 pulses/l

Complete device data	
Process connection	Thread 1/8"; 1/4" (G or NPT)
Measuring range	0.5 to 500 l/h (0.13 to 132 gph)
Fluid temperature max.	Aluminium or PPS body: 80 °C Stainless steel body: 120 °C
Fluid pressure max.	Aluminium or PPS body: 5 bar Stainless steel body: 10 bar or 55 bar (550 bar on request)
Viscosity	1000 cps. max. (higher on request)
Max. particle size	75 µm - To prevent damage from dirt or foreign matter, we strongly recommend the installation of a 75 µm (200 mesh) strainer as close as possible to the inlet side of the meter.
Accuracy	≤ ± 1% of Reading
Repeatability	≤ 0.03% of Reading
Environment	
Ambient temperature	(operating and storage)
Aluminium or PPS body	+ 80 °C max.
Stainless steel body	+ 120 °C max.
Standards and approvals	
Protection class	IP54 (NEMA 13)

Ordering chart for sensor Type 8071

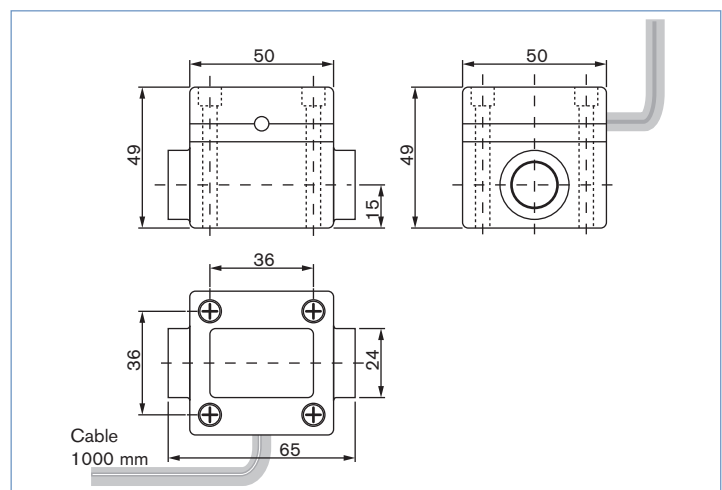
Process connection	Flow Range		Body material	Max. pressure	Rotor / shaft material	Gasket	Item no.			
	> 1 cps	< 1 cps								
G 1/8	0.5-50 l/h (0.13 to 13.2 gph)	5-50 l/h (1.32 to 13.2 gph)	Aluminium	5 bar	Stainless steel	FKM	552 818			
			Stainless steel	10 bar	Stainless steel	FKM	552 820			
				55 bar	Stainless steel	FKM	553 628			
NPT 1/8	0.5-50 l/h (0.13 to 13.2 gph)	5-50 l/h (1.32 to 13.2 gph)	Aluminium	5 bar	Stainless steel	FKM	552 819			
			Stainless steel	10 bar	Stainless steel	FKM	552 821			
				55 bar	Stainless steel	FKM	553 629			
Process connection	Flow Range		Body material	Max. pressure	Rotor / shaft material	Gasket	Item no.			
	> 5 cps	< 5 cps								
G 1/4	2-100 l/h (0.53 to 26.4 gph)	12.5-100 l/h (3.3 to 26.4 gph)	PPS	5 bar	PPS / Hastalloy C	FKM	432 288			
				10 bar		Stainless steel	FKM	550 072		
						55 bar	Stainless steel	FKM	433 864	
			15-500 l/h (4.00 to 132 gph)	40-500 l/h (10.56 to 132 gph)	PPS	5 bar	PPS / Hastalloy C	FKM	550 146	
						10 bar		Stainless steel	FKM	430 856
								55 bar	Stainless steel	FKM
	15-500 l/h for high viscosity*	Stainless steel	10 bar	Stainless steel	Stainless steel	FKM	437 518			
						EPDM	553 651			
						EPDM	553 631			
NPT 1/4	2-100 l/h (0.53 to 26.4 gph)	12.5-100 l/h (3.3 to 26.4 gph)	PPS	5 bar	PPS / Hastalloy C	FKM	448 654			
				10 bar		Stainless steel	FKM	448 656		
						55 bar	Stainless steel	FKM	553 630	
			15-500 l/h (4.00 to 132 gph)	40-500 l/h (10.56 to 132 gph)	PPS	5 bar	PPS / Hastalloy C	FKM	448 655	
						10 bar		Stainless steel	FKM	448 657
								55 bar	Stainless steel	FKM
	15-500 l/h for high viscosity*	Stainless steel	10 bar	Stainless steel	Stainless steel	FKM	553 652			
						EPDM				
						EPDM				

* > 1000 cps

Ordering chart for spare parts (to be ordered separately)

Specifications	Item no.
Set of two rotors for the measuring range	
In stainless steel for 0.5 -50 l/h	560 180
In stainless steel for 2-100 l/h	550 919
In stainless steel for 15-500 l/h	550 920
In PPS for 2-100 l/h	550 921
In PPS for 15-500 l/h	550 922
FKM gasket	550 923
EPDM gasket	550 924
PTFE gasket	550 959
Set of stainless steel cap with hall sensor	553 653
Set of PPS cap with hall sensor	553 654

Dimensions [mm]



To find your nearest Bürkert facility, click on the orange box →

www.burkert.comIn case of special application conditions,
please consult for advice.We reserve the right to make technical changes without notice.
© Christian Bürkert GmbH & Co. KG

0804/6_EU-en_00891792